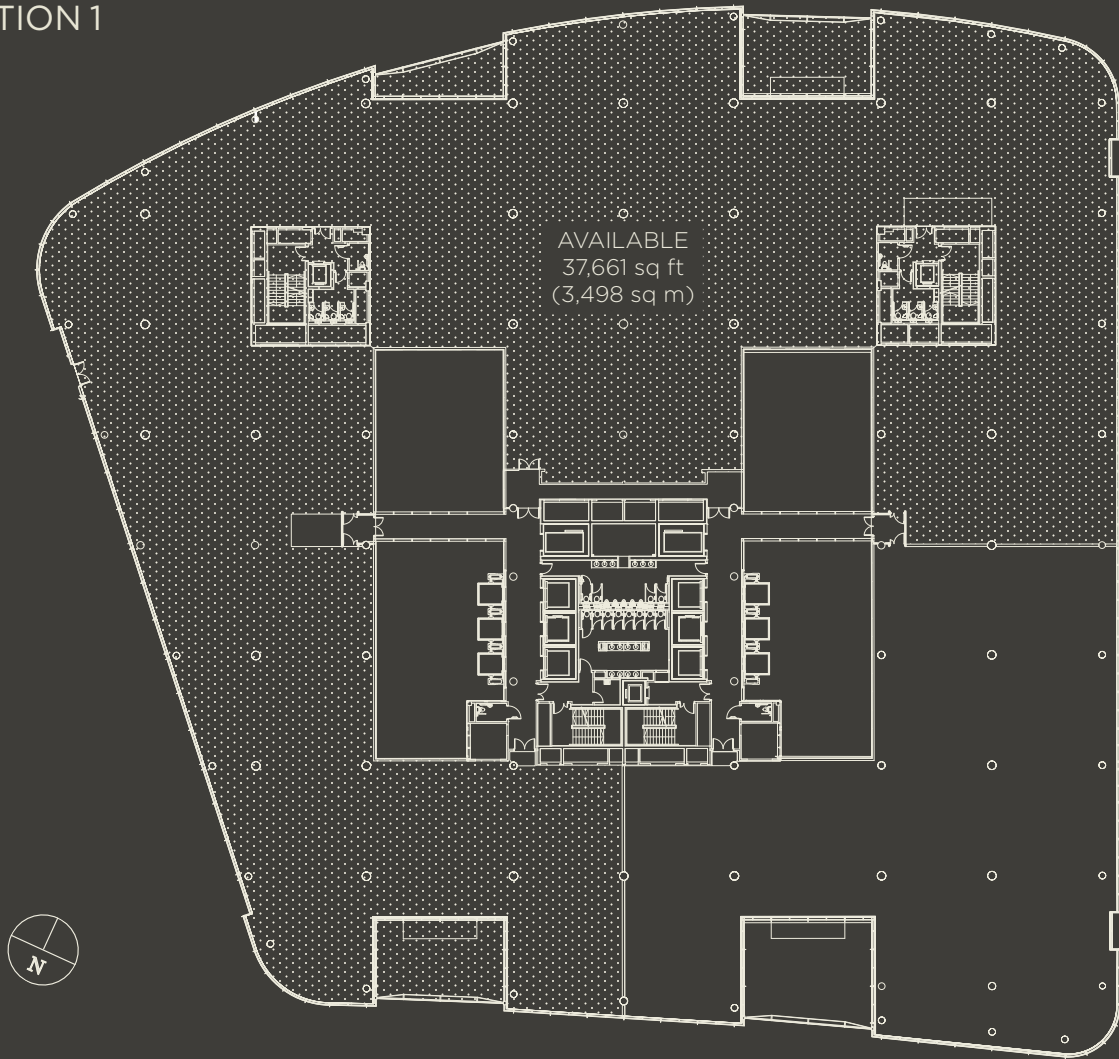


# 80 VICTORIA ST

OPTION 1



VICTORIA STREET

## 5th Floor

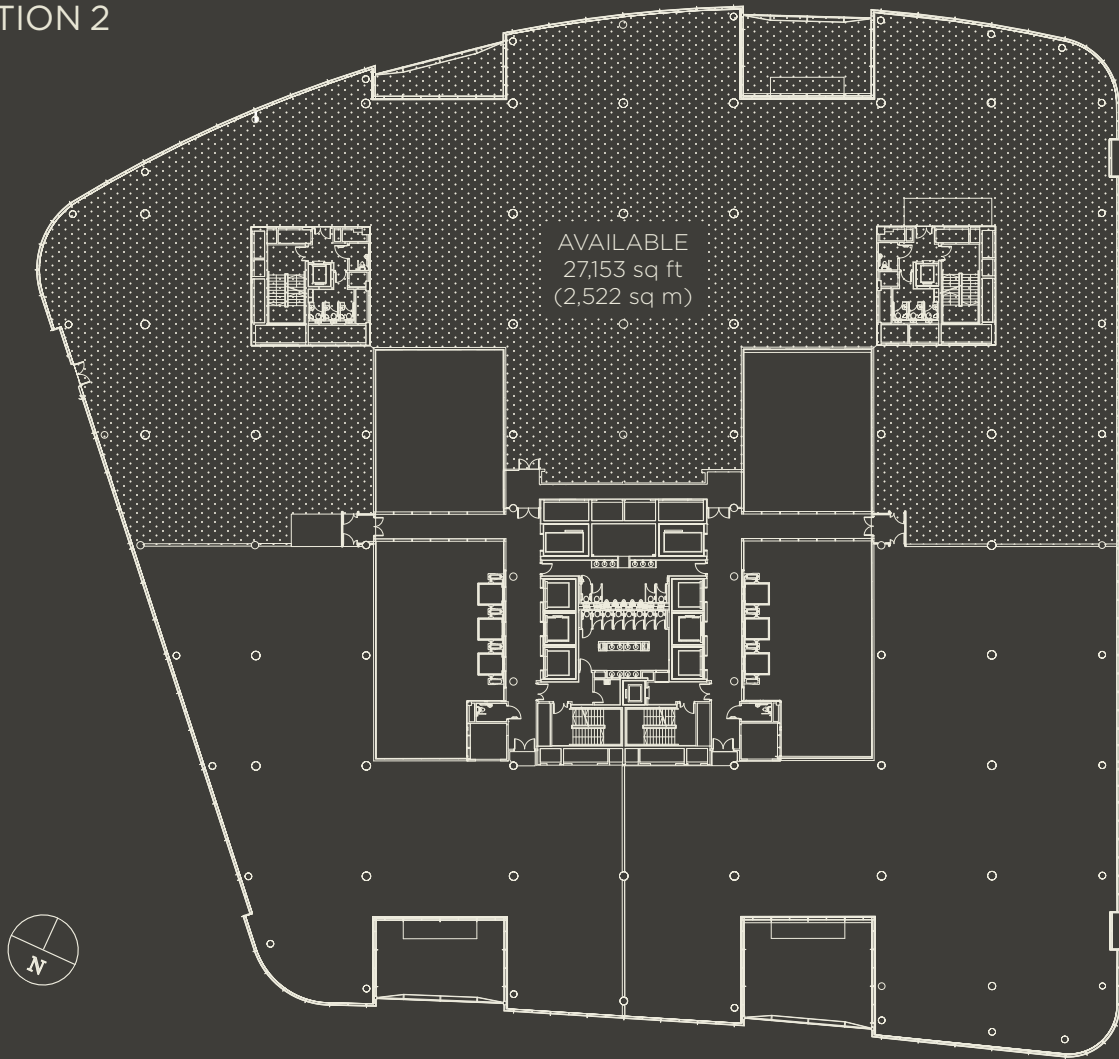
Total Space Available  
37,661 sq ft (3,498 sq m)

Plans not to scale. For indicative purposes only.

[80-100VICTORIAST.CO.UK](http://80-100VICTORIAST.CO.UK)

# 80 VICTORIA ST

OPTION 2



VICTORIA STREET

## 5th Floor

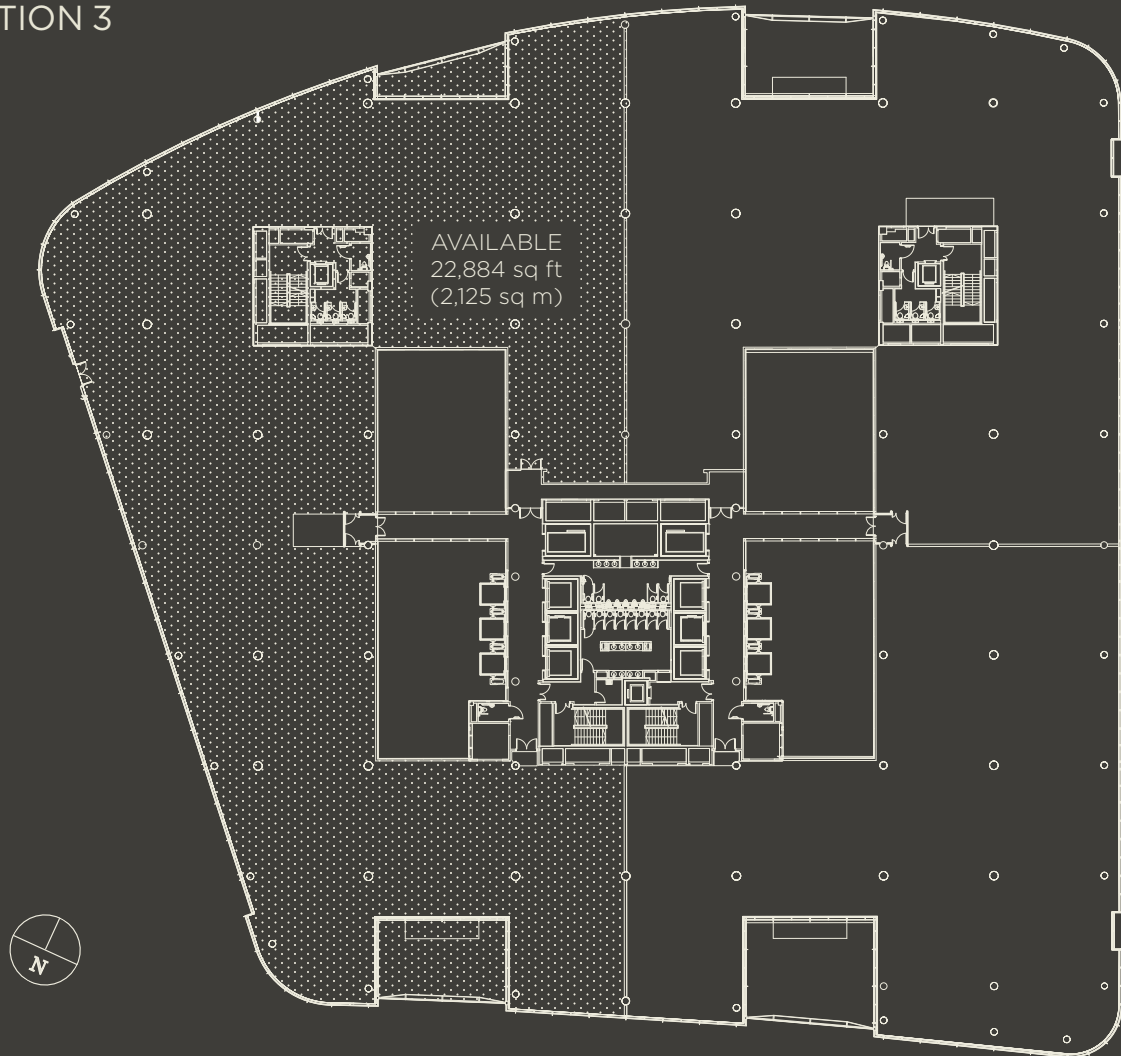
Total Split Available  
27,153 sq ft (2,522 sq m)

Plans not to scale. For indicative purposes only.

[80-100VICTORIAST.CO.UK](http://80-100VICTORIAST.CO.UK)

# 80 VICTORIA ST

OPTION 3



VICTORIA STREET

## 5th Floor

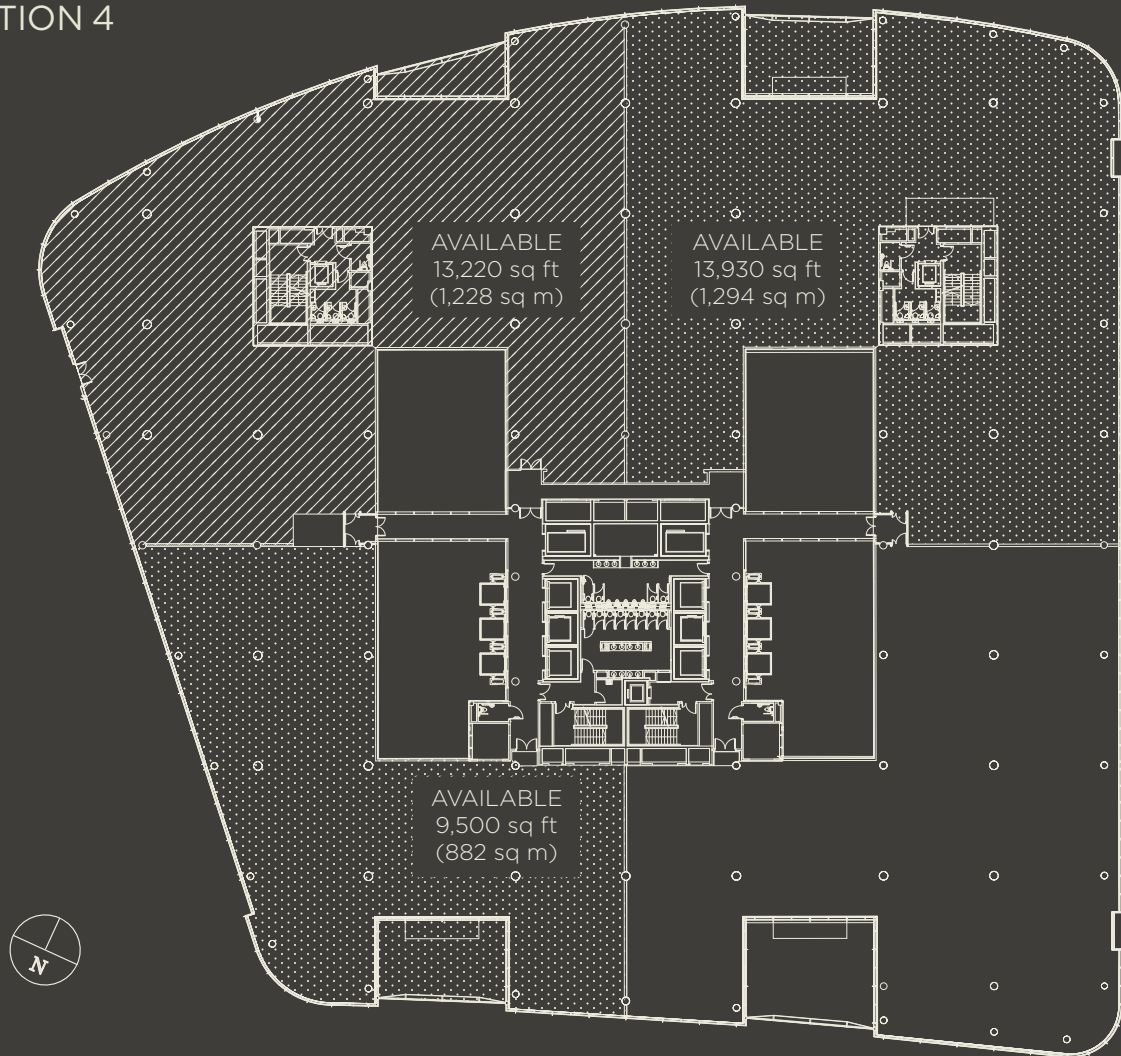
Total Split Available  
22,884 sq ft (2,125 sq m)

Plans not to scale. For indicative purposes only.

[80-100VICTORIAST.CO.UK](http://80-100VICTORIAST.CO.UK)

# 80 VICTORIA ST

OPTION 4



VICTORIA STREET

## 5th Floor

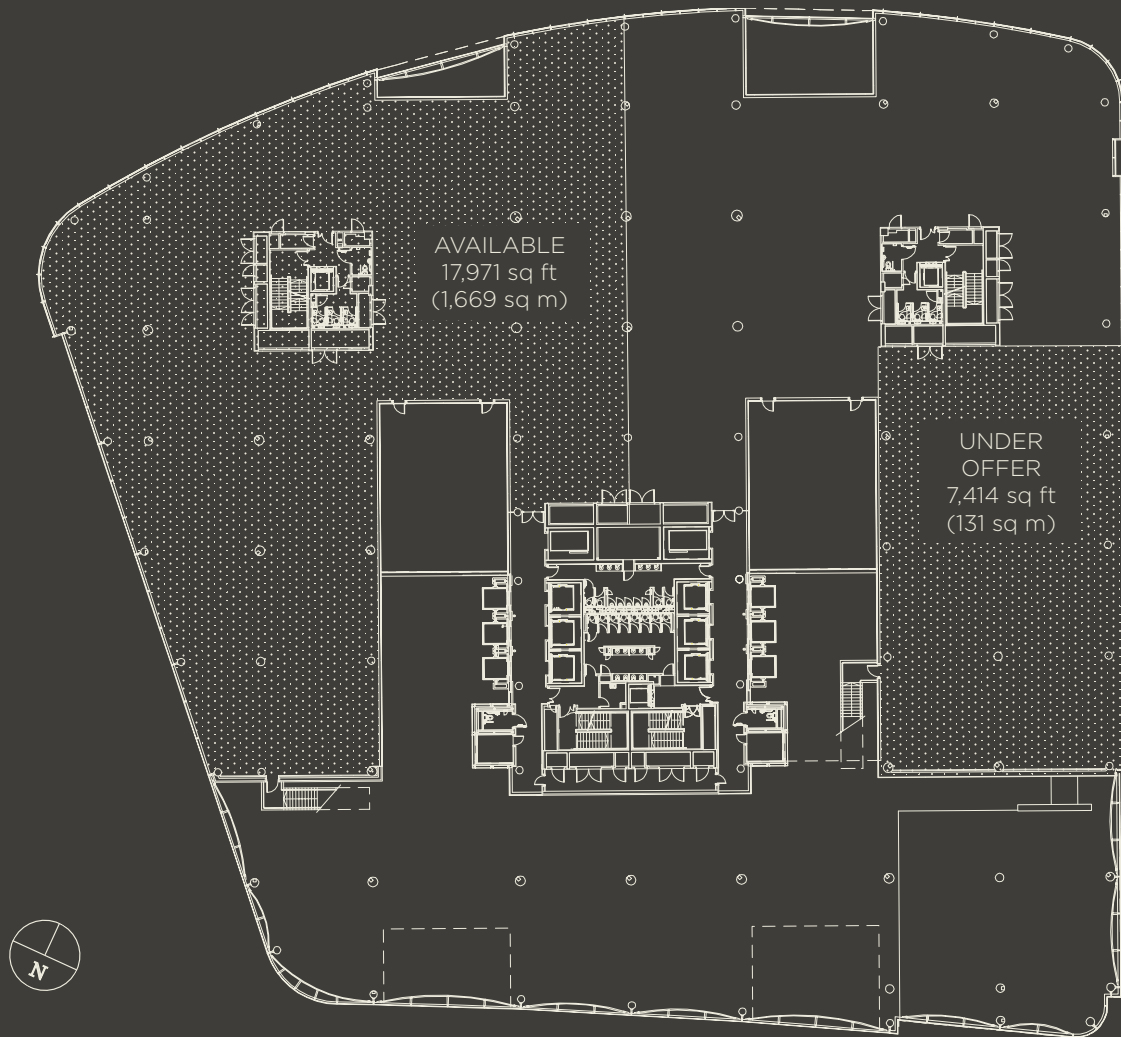
Total Splits Available

13,930 sq ft (1,294 sq m) | 13,220 sq ft (1,228 sq m) | 9,500 sq ft (882 sq m)

Plans not to scale. For indicative purposes only.

[80-100VICTORIAST.CO.UK](http://80-100VICTORIAST.CO.UK)

# 80 VICTORIA ST



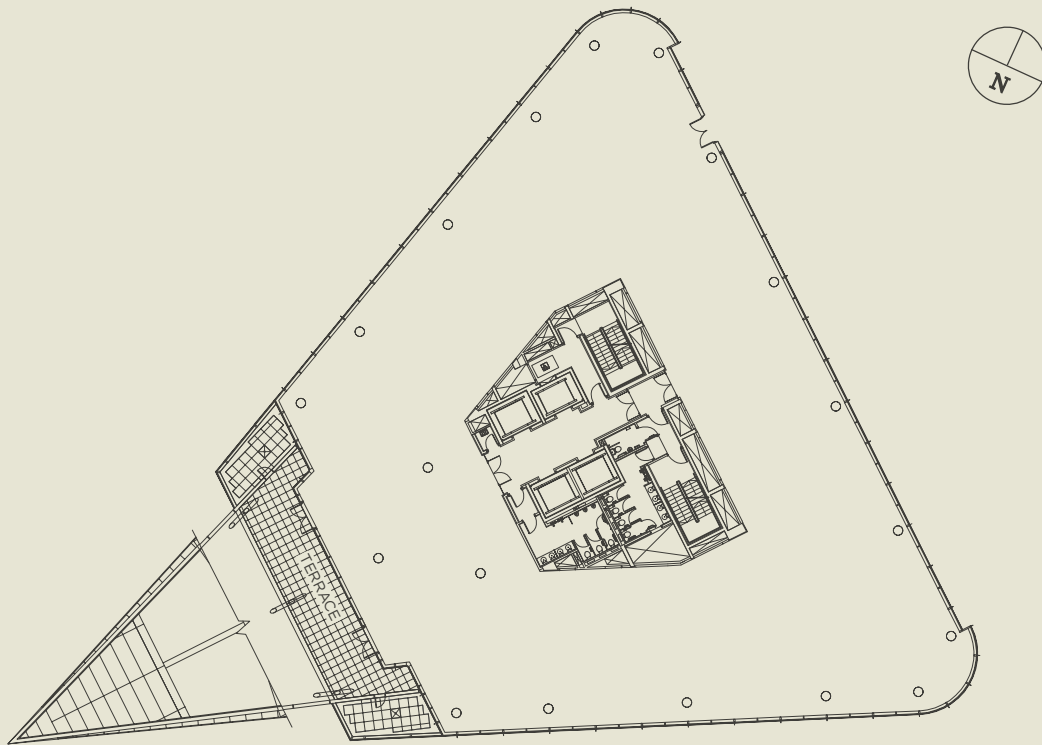
VICTORIA STREET

## 2nd Floor

Available August 2017  
17,971 Sq ft (1,669 sq m)

Under Offer  
7,414 sq ft (131 sq m)

# 100 VICTORIA ST



---

VICTORIA STREET

---

## 4th Floor

Available Now  
11,653 sq ft (1,082 sq m)

## Roof terrace

668 sq ft (62 sq m)